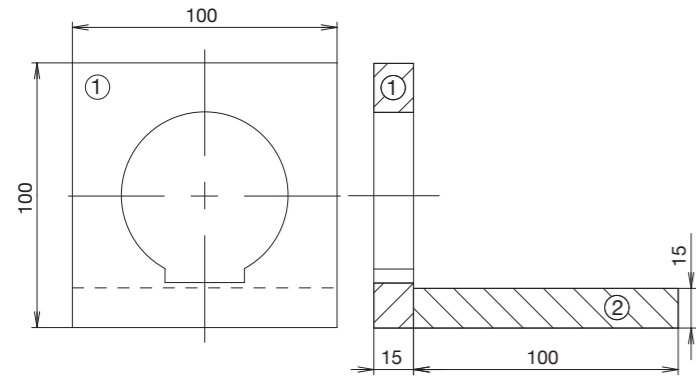


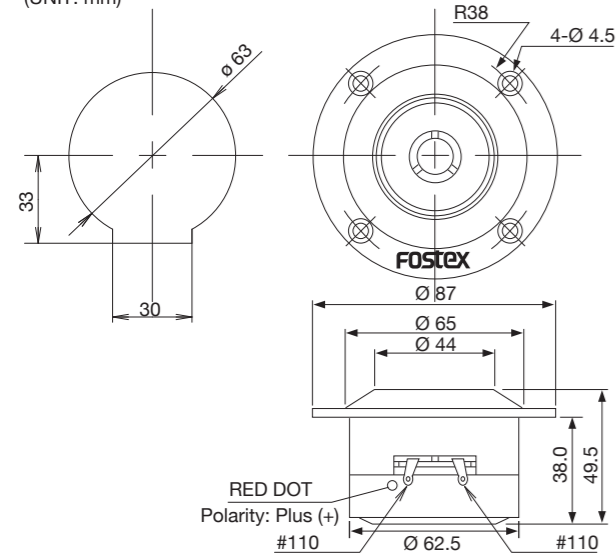
Tweeter Base Assembly Drawing

(UNIT: mm)

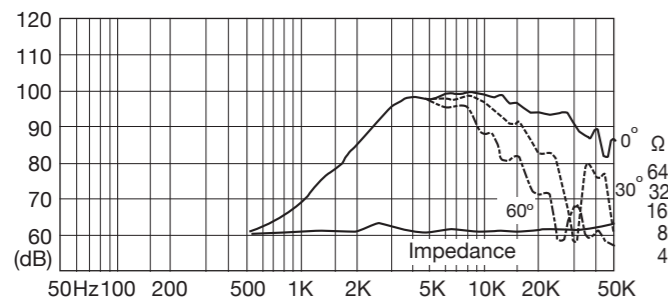


Outer & Installation Hole Dimensions

(UNIT: mm)

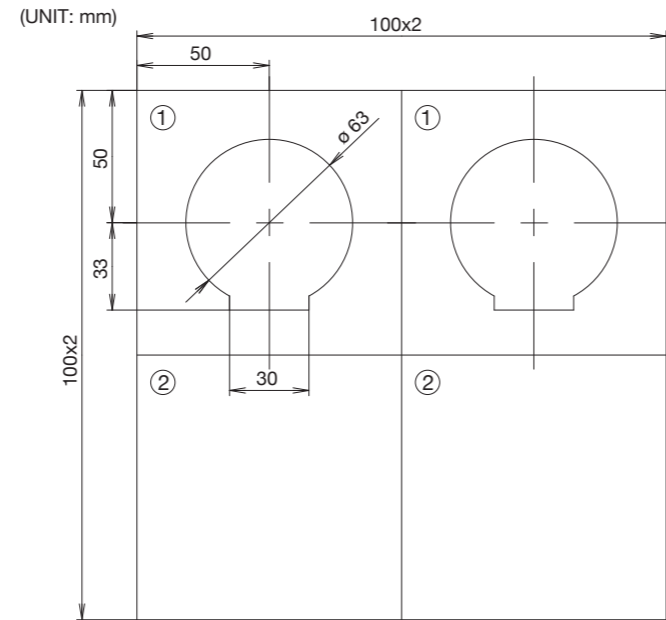


Frequency Response



Tweeter Base Board Cutting Plan (Board Material: MDF T15)

(UNIT: mm)



Specifications

Type	16 mm horn tweeter
Impedance	8 Ω
Freq. Response	5 kHz ~ 35 kHz
SPL	96 dB/W (1 m)
Input	30 W (Music)
Cut-off Frequency	2.6 kHz
Recommended Cross-over Freq.	5.0 kHz or higher
Magnet Weight	113.5 g
Total Weight	340 g

- Specifications and appearance are subject to change without notice for product improvement.

* Caution

The FT17H magnetic circuit is not completely leakage free and a slight leakage is observed at its right behind direction. Do NOT place any magnetically susceptible media within 10cm at right behind the magnetic circuit.

FOSTEX

OWNER'S MANUAL

HORN TWEETER



FT17H

Thank you for purchasing the Fostex product. Please read this manual thoroughly before start using and use the product correctly.

Main Features

The model FT17H is an easy to use high performance horn tweeter. With its precisely engineered horn part and specially made diaphragm, it offers sharp sound and high efficiency. Its magnetic circuit is constructed with low magnetic leakage, and it can be used as a plus-one tweeter for main speaker system just with plain network. It is suited to use in combination with Fostex FE-series or FF-series full range speaker drivers.

Tweeter and Dividing Network

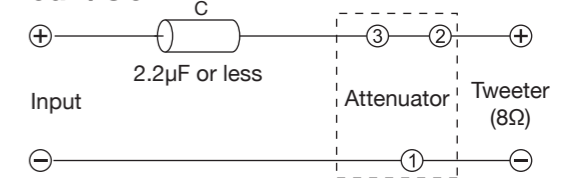
- Tweeter should be connected to either woofer or mid-range driver via dividing network. Use as high quality components as possible for the dividing network. If you used poor quality components for the network, the sound would be drastically deteriorated and distorted. We recommend using Fostex network components and attenuator model R80B.

- If you use 6dB/Oct. network, it is recommended to use a capacitor whose capacity is 2.2uF or less. Use a high quality film capacitor.

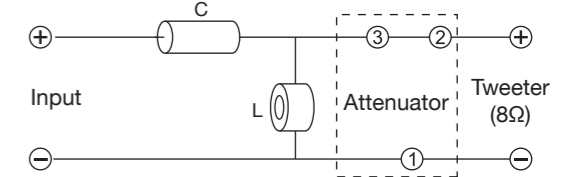
* Caution

It is not good to connect a tweeter directly to an amplifier. Doing so would cause a break of voice coil wire and buzz sound. Please connect a tweeter via the dividing network.

6dB/Oct.



12dB/Oct.



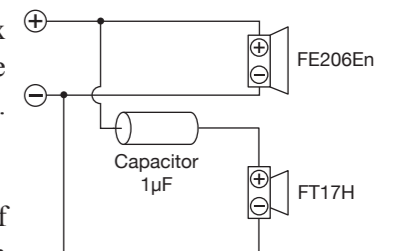
Cross-over Frequency	12dB/Oct.	
	C (µF)	L (mH)
5,000Hz	2.2	0.3
7,000Hz	1.5	0.18
10,000Hz	1.0	0.14

Practical Application

● FE206En+FT17H+BK206En

This is an example of the FE206En installed in the back loaded horn box BK206En adding an FT17H as plus-one tweeter. The network consists of one piece of film type capacitor connected in series and it offers 6dB/Oct filtering. We recommend the value of capacitor as 1uF.

Connect the capacitor to FE206En in phase. Locate the FT17H on the top of BK206En enclosure and about 45 mm retracted position from the BK206En baffle board, i.e., measure the distance at the flat surface of FT17H outer horn. This positioning will make smooth association of main speaker and tweeter. We recommend the use of tweeter base when locating the FT17H. Please refer to the tweeter base drawing below.



FOSTEX

FOSTEX COMPANY
1-1-109, Tsutsujigaoka, Akishima City, Tokyo, 196-8550, Japan