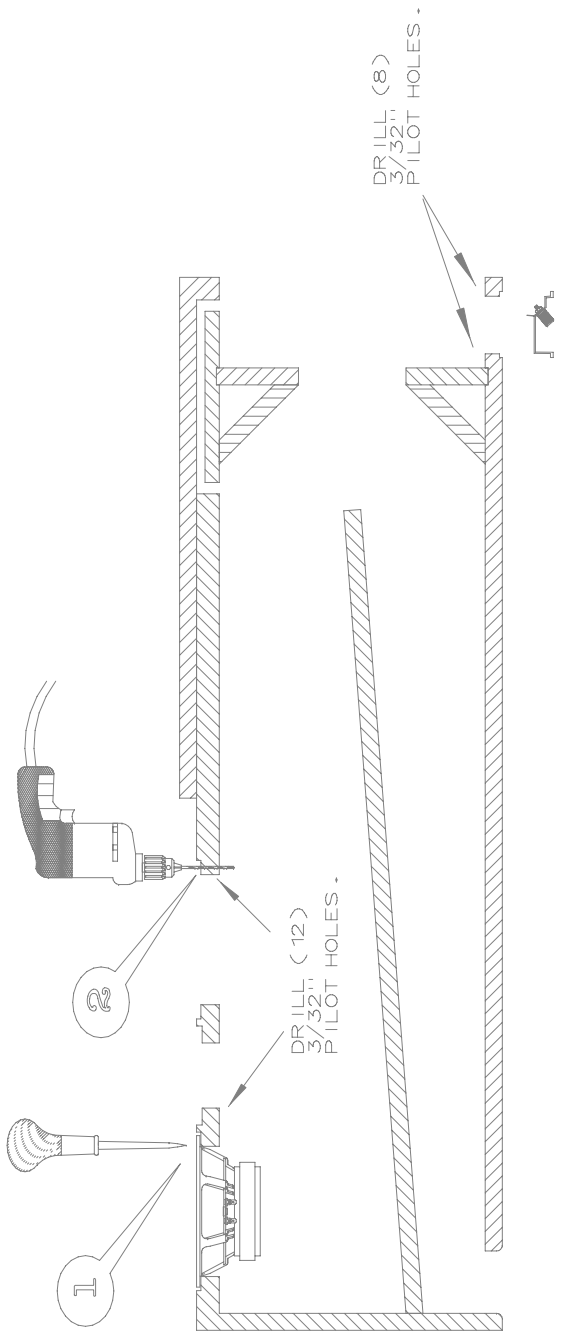


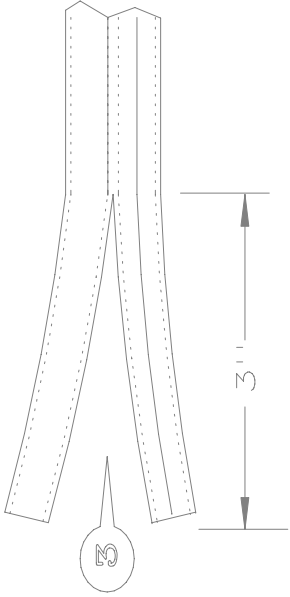
1 USING SPEAKERS AND DB-CUP AS TEMPLATES, MARK FOR PILOT HOLES.

#2 DRILL (20) 3/32" PILOT HOLES.



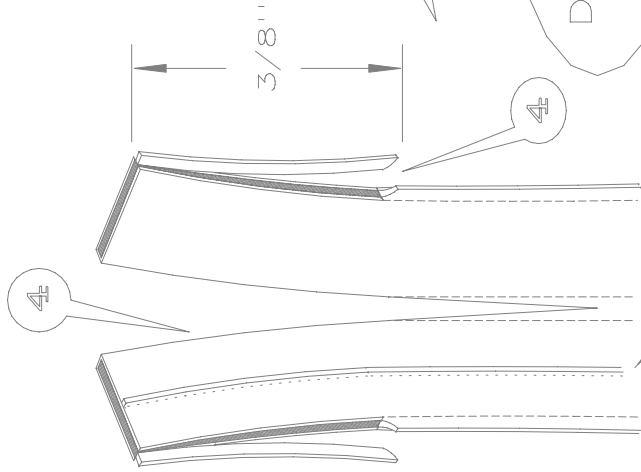
CUT 2-FLAT WIRE TO THE FOLLOWING LENGTHS.

- 2// pcs : 18" TWEETER INPUT
- 2// pcs : 10" WOOFER INPUT
- 2// pcs : 50" TWEETER #2
- 2// pcs : 52" WOOFER #2
- 2// pcs : 64" WOOFER #1

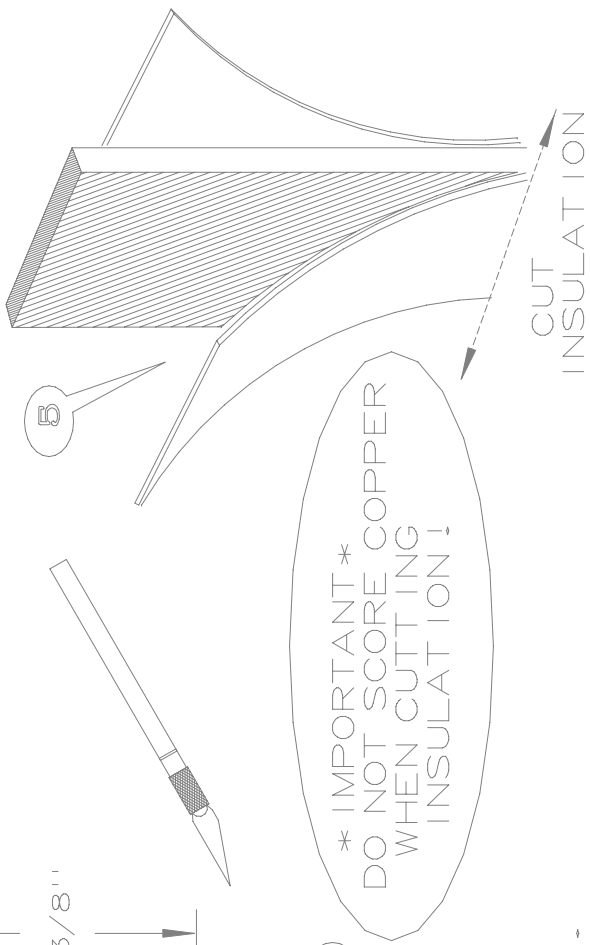


3) WITH A RAZOR SHARP KNIFE, SPLIT INSULATION BACK 3".

4) SHAVE 3/8" INSULATION OFF THE 4 EDGES ON EACH END.

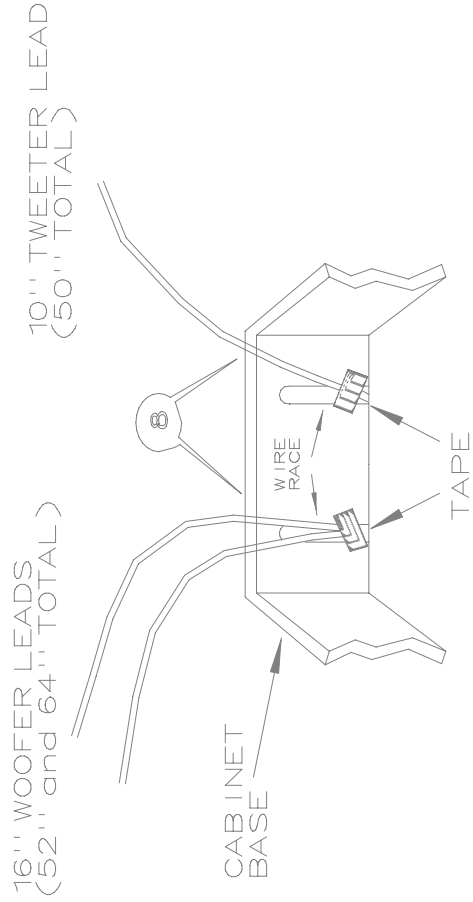
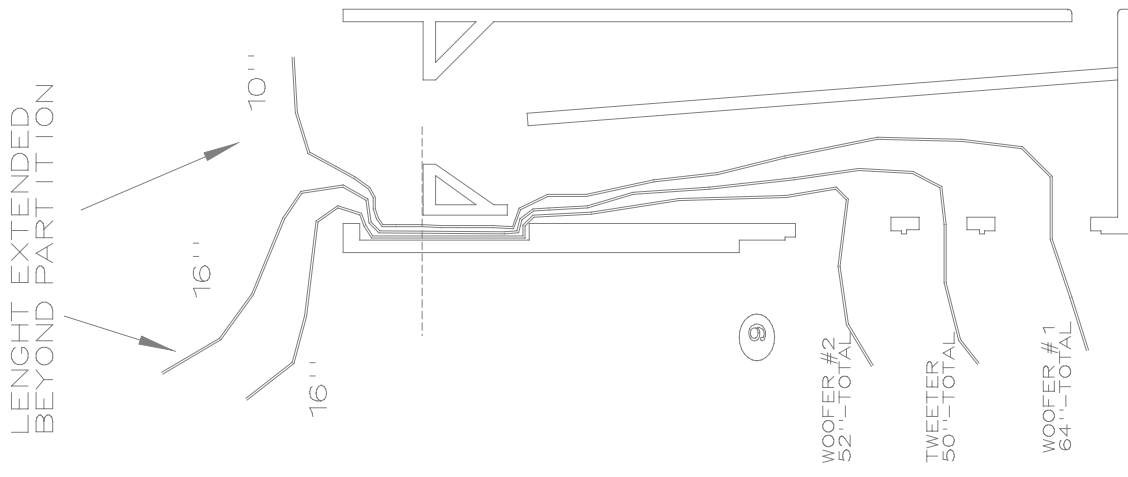
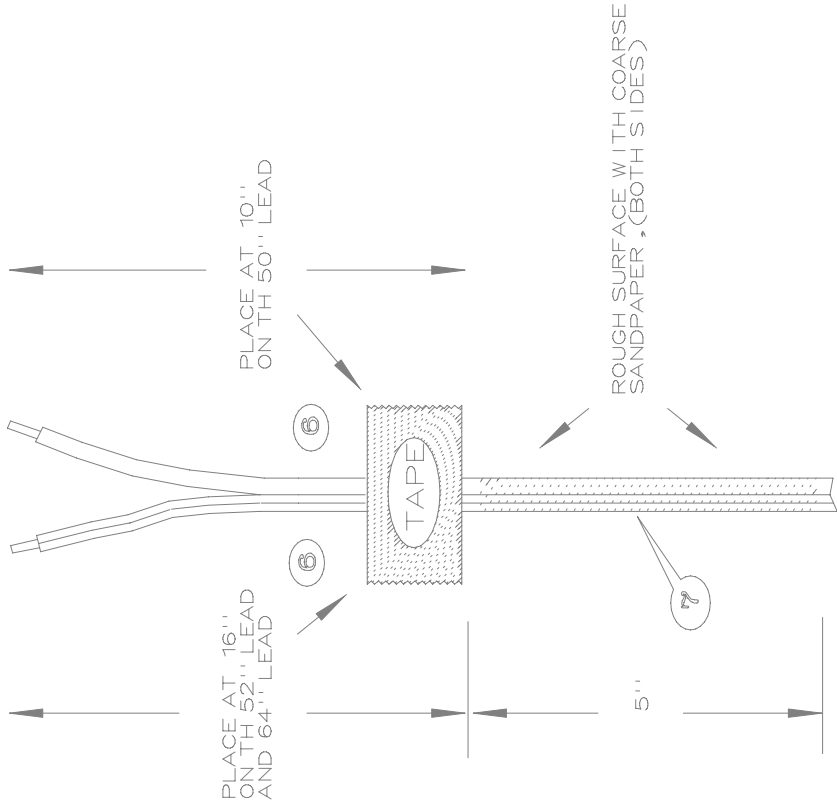


5) PEEL BACK AND CUT OFF INSULATION ON THE FLAT SIDES.

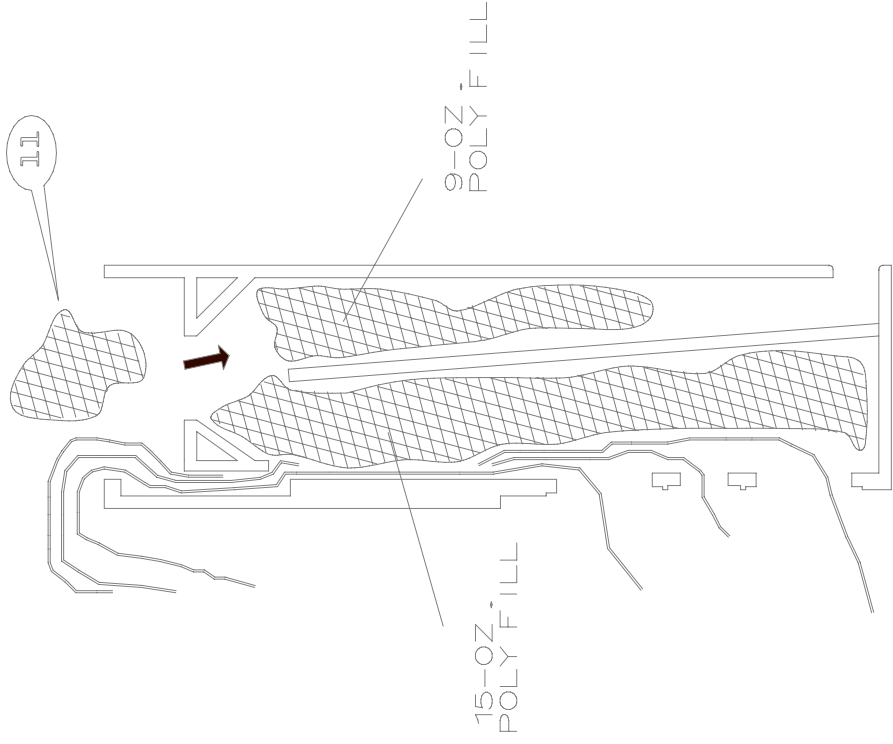
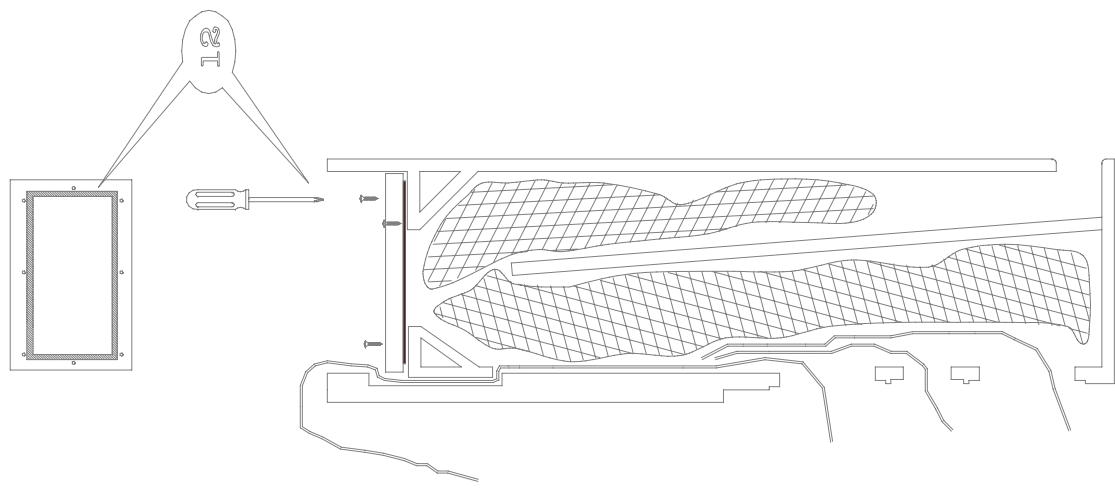
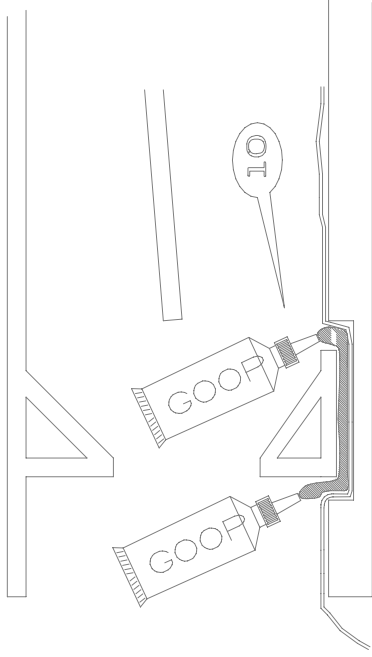


USE RIDGE AS + ON ALL LEADS.

- 6) PLACE A 3" PIECE OF MASKING TAPE AROUND THE LONG LEADS AT THE DISTANCE SHOWN BELOW .
- 7) WITH COARSE SANDPAPER ROUGH UP 5" OF INSULATION BELOW TAPE , BOTH SIDES .
- 8) WITH CABINET SITTING BOTTOM SIDE UP , FEED WIRE LEADS DOWN THROUGH PROPER HOLES
- 9) IDENTIFY THE LEADS AND BRING OUT THROUGH THE SPEAKER CUT-OUTS . MARK WITH MASKING TAPE . THEN TAPE THEM OUT OF THE WAY TO THE SIDE OF CABINET .



- 10) MAKE SURE WIRES ARE IN PLACE, THEN FLOOD WIRE RACES WITH GOOP. DO NOT DISTURB UNTILL DRY. (4-5 HRS)
- 11) TEASE POLY-FILL, THEN PALCE EVENLY IN CABINET. 15-OZ. IN FRONT CHAMBER AND 9-OZ. IN REAR.
- 12) PLACE FOAM TAPE AROUND THE BOTTOM PERIMETER OF THE BASE PLATE. INSTALL BASE WITH DRY-WALL SCREWS.

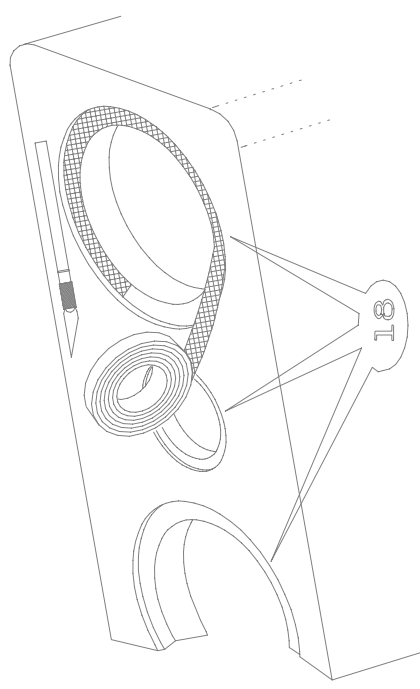
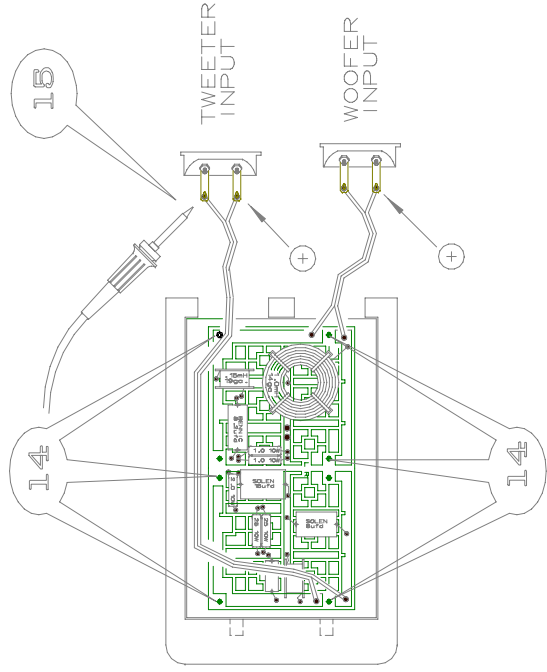
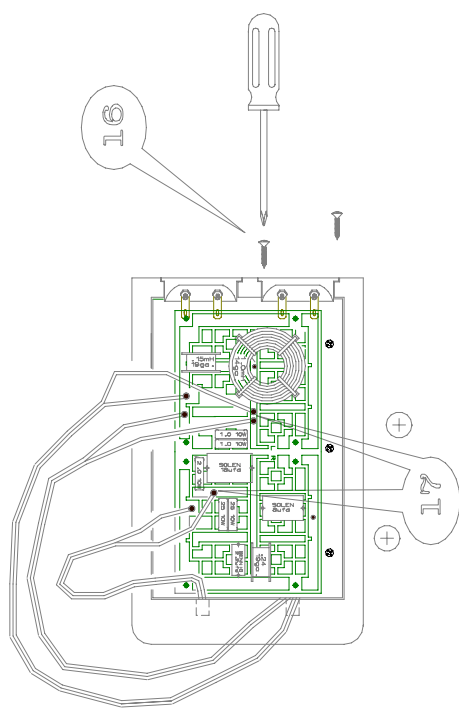
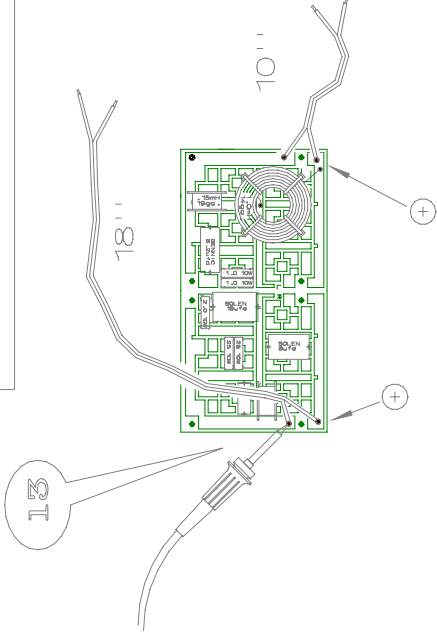
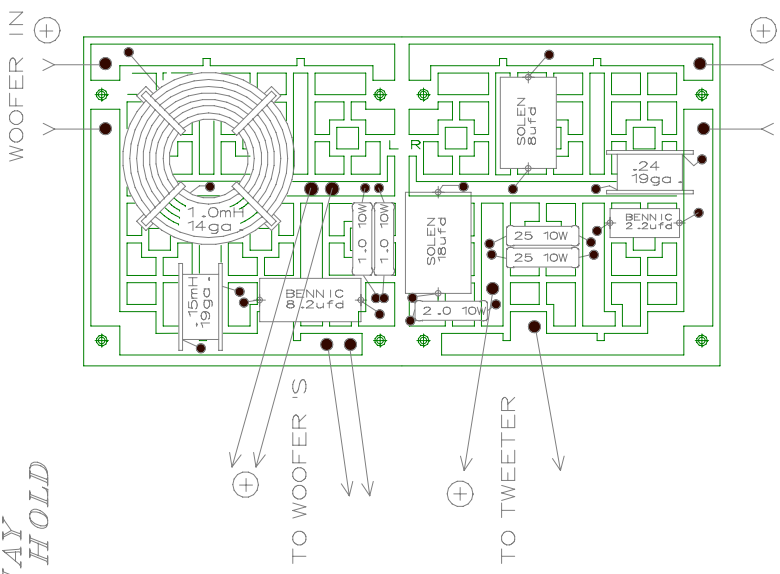


SOLDERING NOTES:

PRE-TIN WIRE ENDS. ALSO HEAT TRAVELS UP 2-FLAT WIRE VERY QUICKLY, YOU MAY WANT TO USE NEEDLE NOSE PLIERS TO HOLD THE WIRE WHEN SOLDERING.

- 13) SOLDER THE 10" AND 18" INPUT WIRES TO COVER BOARD.
- 14) CENTER COVER ON BASE THEN INSTALL WITH (6) #6x3/4" PAN-HEAD SCREWS.
- 15) SOLDER WIRES TO INPUT CUPS *OBSERVE POLARITY!
- 16) MOUNT INPUT CUPS WITH (8) #6-3/4" OVAL-HEAD SCREWS.
- 17) SOLDER DIVER LEADS TO COVER. *OBSERVE POLARITY!
- 18) PLACE FOAM-TAPE ON ROUTED AREA OF THE SPEAKER CUT-OUTS. PRESS FIRMLY AND EVENLY.

OBSERVE POLARITY!



19) SOLDER WIRES TO DRIVERS
*OBSERVE POLARITY!!

20) ALIGN DRIVERS WITH P I L O T HOLES .
SECURE THE DRIVERS WITH #8x 1" SCREWS ,
TIGHTEN SLOWLY AND EVENLY .

NOTE : WHEN FINISHED WOOFER POLARITY CAN BE
CHECKED WITH A D-CELL BATTERY PLACED
ACROSS THE WOOFER INPUT CUP .
WOOFERS SHOULD MOVE IN THE SAME
DIRECTION .

IF THE WOOFER POLARITY IS WRONG ,
THE SPEAKER WILL HAVE VERY LITTLE BASS .

IF THE TWEETER POLARITY IS WRONG
THE MIDRANGE WILL HAVE A DIP
AND SOUND VERY ODD .

ENJOY YOUR NEW SPEAKERS !

